



Client Education Program **Workers' Compensation**

A comprehensive educational program offered to current clients covering a variety of topics within the workers' compensation industry.

2017 Series

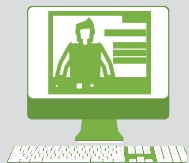
Our workers' compensation educational series is designed to familiarize yourself with Ohio's workers' compensation system and show you how to maximize your program.

In addition to the sessions listed, special sessions may also be scheduled throughout 2017 on unique topics. All session times listed are est/edt and are approximately 60 minutes in length.

Please make sure we have your email address on file so you do not miss your opportunity to attend. Please call us at (800) 825-6755, option 3 or email us at customer.update@sedgwickcms.com to submit your email address or update current information. When new sessions are added, communications will be sent 4 weeks in advance of the session date via email.

Please note: unless otherwise indicated in the session description or communicated in our promotion, registration or confirmation emails, our client education program is available to current clients of CompManagement only and is solely intended for educational purposes. Ohio Bureau of Workers' Compensation safety training requirements and/or continuing education units (CEUs) are only applicable for webinar sessions when shown in the session description. Recorded sessions are not eligible.

WEBINAR REGISTRATION



1. Send email to:
seminarrsvp@sedgwickcms.com
2. Include the following:
 - Attendee name(s)
 - Company name
 - BWC policy number
 - Date/session name to attend

Please contact us with questions at the above email or by phone at (800) 825-6755, extension 65751.

Once your email is received, a confirmation email will be sent to your attention from seminarrsvp@sedgwickcms.com. Please be sure to add this email address to your Safe Sender file so future emails will be received. Two business days prior to the session date, an email will be sent to your attention which will include detailed instructions on how to join the webinar along with a copy of the presentation (if applicable).

Workers' Compensation 101 - An Introduction to Ohio's Workers' Compensation System

This session designed for both private and public (cities, villages, counties, townships, schools, etc.) employers will provide a complete summary of the fundamental principles of Ohio's workers' compensation system. It is especially beneficial to those new to the system as it provides an understanding of the roles and responsibilities of the resources available to you: the Bureau of Workers' Compensation (BWC), Industrial Commission (IC), Third Party Administrator (TPA) and Managed Care Organization (MCO). We will also discuss post injury protocol as well as useful safety and accident prevention information. This session has been certified by the Ohio Bureau of Workers' Compensation for 1-hour of the 2-hour safety training requirement for group and group retrospective-rated employers.

Session 1		Session 2		Session 3		Session 4		Session 5		Session 6	
Date	Time	Date	Time	Date	Time	Date	Time	Date	Time	Date	Time
Feb 16	10:00 am	Apr 25	2:00 pm	June 22	10:00 am	Aug 8	2:00 pm	Oct 5	10:00 am	Dec 7	10:00 am

over

Mar 2017

BRIGHT IDEAS

begin with **compmanagement**

powerful **solutions** | glowing **results**

800.825.6755 | www.compmgmt.com





Client Education Program **Workers' Compensation**

Return to Work Strategies

Getting an injured employee back to full duty work can be a challenging and confusing process. In this session designed for both private and public (cities, villages, counties, townships, schools, etc.) employers, we will review the steps to take when offering transitional duty (from obtaining restrictions through a full duty release). We will also walk through the decision process involved in offering wage/salary continuation and highlight the importance of monitoring lost time claims. In addition, we will review the various programs offered through vocational rehabilitation including their applications and cost implications. This session has been certified by the Ohio Bureau of Workers' Compensation for 1-hour of the 2-hour safety training requirement for group and group retrospective-rated employers.

Session 1		Session 2	
Date	Time	Date	Time
March 21	10:00 am	June 6	2:00 pm

Public Employers: Gaining a Better Understanding of the True-Up Process

With the first year of prospective billing completed, all public employers (villages, cities, counties, schools, water conservancies, libraries, townships, etc.) must complete the Bureau of Workers' Compensation (BWC) True-Up process. True-Up reports must be completed by all employers to reconcile the January 1, 2016 - December 31, 2016 actual payroll versus estimated payroll. This session will review the process, the report and the requirements for all public employers to aid in meeting the BWC's February 15, 2017 deadline for completing the report. This session has been certified by the Ohio Bureau of Workers' Compensation for 1-hour of the 2-hour safety training requirement for group and group retrospective-rated employers.

Session 1		Session 2	
Date	Time	Date	Time
January 17	10:00 am	February 7	2:00 pm

Selecting the Best Workers' Compensation Program

Selecting the best Bureau of Workers' Compensation (BWC) premium savings program for your organization can be complicated given the variety of options available. This session provides an outline of the current programs which includes financial benefits, compliance requirements, compatibility options with other programs, the enrollment process and filing deadlines. This session has been certified by the Ohio Bureau of Workers' Compensation for 1-hour of the 2-hour safety training requirement for group and group retrospective-rated employers.

Public Employers (cities, counties, villages, schools, water conservancies, libraries, townships, etc.)			
Session 1		Session 2	
Date	Time	Date	Time
April 11	2:00 pm	April 20	10:00 am

Private Employers			
Session 1		Session 2	
Date	Time	Date	Time
Sept 12	10:00 am	Sept 21	2:00 pm

Destination Excellence Program

The Bureau of Workers' Compensation's (BWC) Destination Excellence program includes Administrative rebates, Safety Council rebates, an Industry Specific bonus, a Drug Free Safety incentive program and a Transitional Work Grant and bonus. This session will help define the individual programs, outline the available discounts/rebates associated with each program navigate the requirements as well as compatibility and deadlines applicable. This session has been certified by the Ohio Bureau of Workers' Compensation for 1-hour of the 2-hour safety training requirement for group and group retrospective-rated employers.

Public Employers (cities, counties, villages, schools, water conservancies, libraries, townships, etc.)			
Session 1		Session 2	
Date	Time	Date	Time
October 10	10:00 am	October 19	2:00 pm

Private Employers			
Session 1		Session 2	
Date	Time	Date	Time
May 9	2:00 pm	May 16	10:00 am

Understanding Your Rate Calculation and the Factors That Drive Your Cost

With a focus on what factors drive your premiums, this session will drill down to show how the Bureau of Workers' Compensation (BWC) calculates an employer's premium rate and explain the individual steps that go into determining the experience modifier. We will show how an individual claim can impact the rate calculation and touch on some claims management strategies that can be employed to favorably impact the calculation. This session has been certified by the Ohio Bureau of Workers' Compensation for 1-hour of the 2-hour safety training requirement for group and group retrospective-rated employers.

Public Employers (cities, counties, villages, schools, water conservancies, libraries, townships, etc.)			
Session 1		Session 2	
Date	Time	Date	Time
November 7	10:00 am	November 16	2:00 pm

Private Employers			
Session 1		Session 2	
Date	Time	Date	Time
August 15	10:00 am	August 24	2:00 pm